



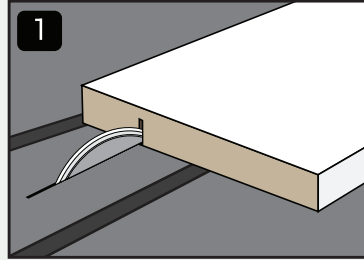
Flush Trim Mount [Lite]

INSTALL GUIDE

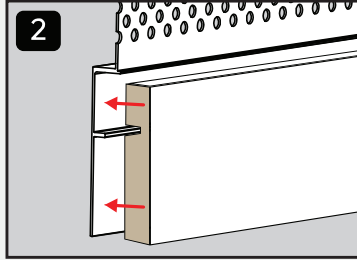


Scan to unlock
your free warranty

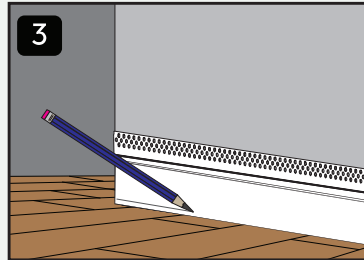
Or — on your phone?
Press + hold the QR code to
go straight there.



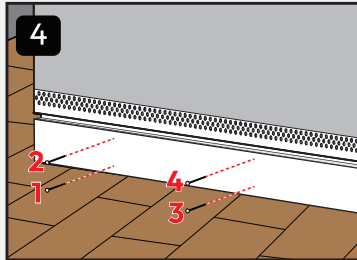
1
Cut a $7/32$ " (6mm) slot in the rear of trim to the desired gap height.



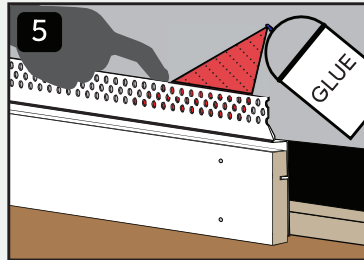
2
Dry fit trim into **Flush Trim Mount**.



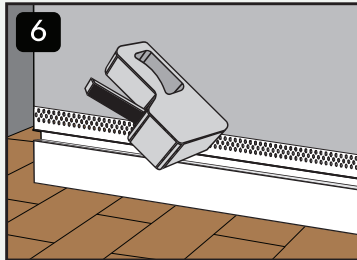
3
Dry fit **Flush Trim Mount** into drywall. Scribe trim to ensure flush finish.



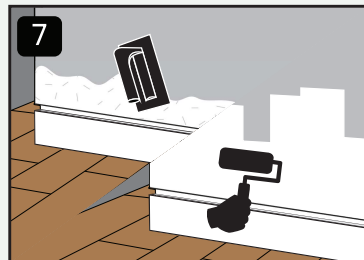
4
Secure trim in place with brad nails beginning furthest from **flange**.



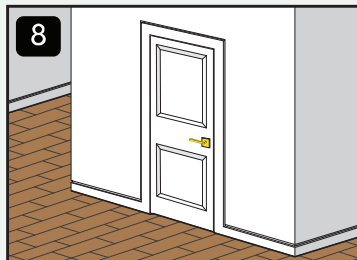
5
Peel **flange** forward and spray adhesive onto rear to ensure maximum bonding.



6
Once gluing is complete, add staples to the **flange** surface.



7
Mud over **flange**. Once dry, sand until smooth. Paint to customize.



8
And thats it! Fittes to perfection.