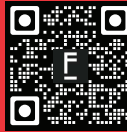


Fittes

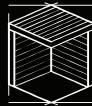
Framed Wall Vent

Materials Needed
INSTALL GUIDE

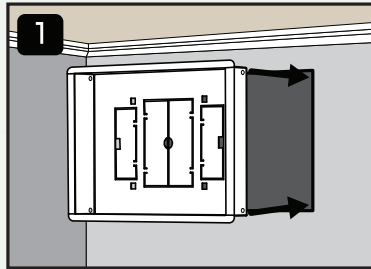


Scan to unlock
your free warranty

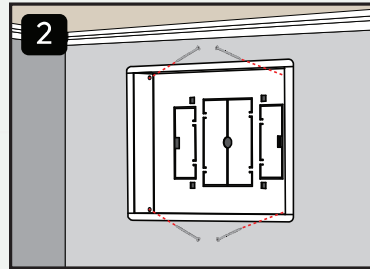
Or — on your phone?
Press + hold the QR code to
go straight there.



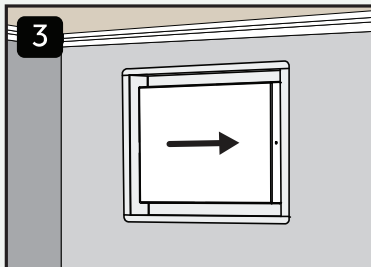
Walls + ceilings
Do not use on floors



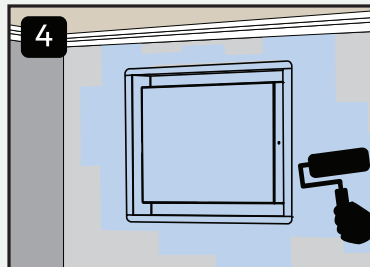
1 Dry-fit **body** into duct opening.



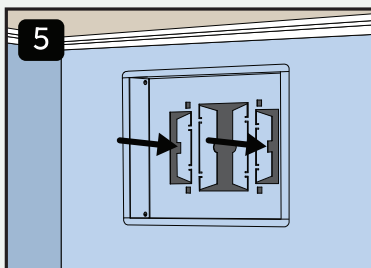
2 Ensure flange is flat to the wall.
Use provided screws to fasten.



3 Insert **plate** and slide into
place until secured.

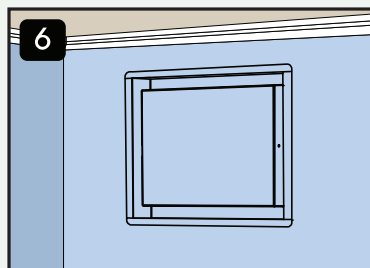


4 Paint or wallpaper inside of **body** +
plate to match surrounding walls.



5 To adjust airflow, remove **plate**
and bend dampers. For optimal air
flow, push dampers past 90°.

For **Lite** versions of this product,
dampers are not included. Optional
dampers are sold separately.



6 That's it! Fittes to perfection.

FITTES.COM

MADE IN NORTH AMERICA